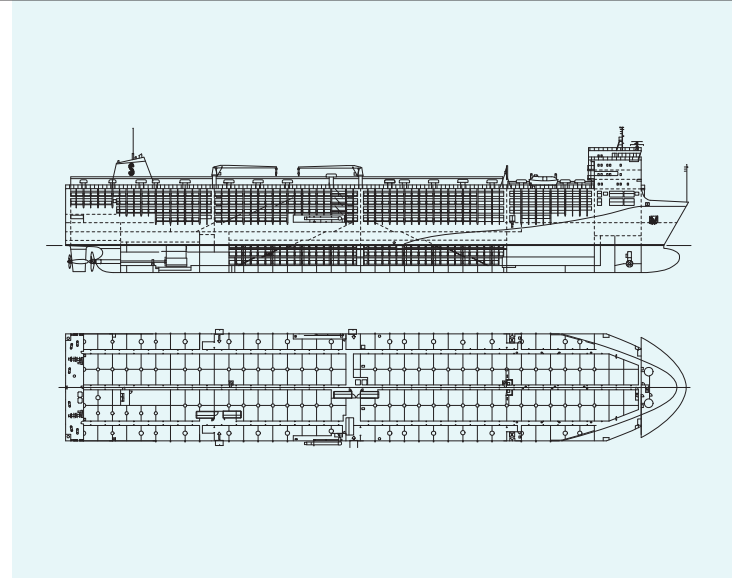


Diesel electric driven Livestock Carrier

24,000 m²



Builder: **Shipyards ULJANIK**
 Designed by: Shipyards Uljanik
 Project No: 11907-A

Classification: ± RINA; ±100 A1.1-MN-LSC-NAV.II-L-AVM / APS
 IAQ1, or equivalent DNV, LR, BV

Length over all	180.60 m
Length btw perp.	169.25 m
Breadth moulded	31.10 m
Depth to deck No. 10	24.33 m
Draught design	7.70 m
Draught scantling	8.70 m
Deadweight at design draught	10,800 t
Deadweight at scantling draught	14,700 t
Main engine:	ULJANIK/MAN-B&W; 6S50MC-C,
Output:	9,480 kW / 127 RPM
P.O.D.	2,000 kW
Speed service (90% MCR. + 2,000 kW P.O.D. 15% SM)	19.8 knots

Capacities

Cargo space, total net pen area	abt. 24,000 m ²
Ballast tanks	abt. 500 m ³
Fresh water for livestock	abt. 3,000 m ³

Provisions

Heavy fuel oil	abt. 2,100 m ³
Diesel fuel oil	abt. 140 m ³
Lubricating oil	abt. 70 m ³
Potable / drinking water	abt. 200 m ³
Cruising Range	17,000 n.m.
Crew Complement:	45

The vessel is built as Livestock Carrier, suitable to carry Sheeps and cattles in world wide service.

Bottom and sea chests – SPC antifouling
 Ballast tanks – epoxy

Cargo equipment

- Food distribution system for Livestock of 140 t / day of pellets.
- Water production system of 850 t / day
- Ventilation system for 45 air changes for open decks.
- Ventilation system 70/45 air changes for enclosed decks.

Transmission

- Fixed propeller plant.
P.O.D.

Heating plant

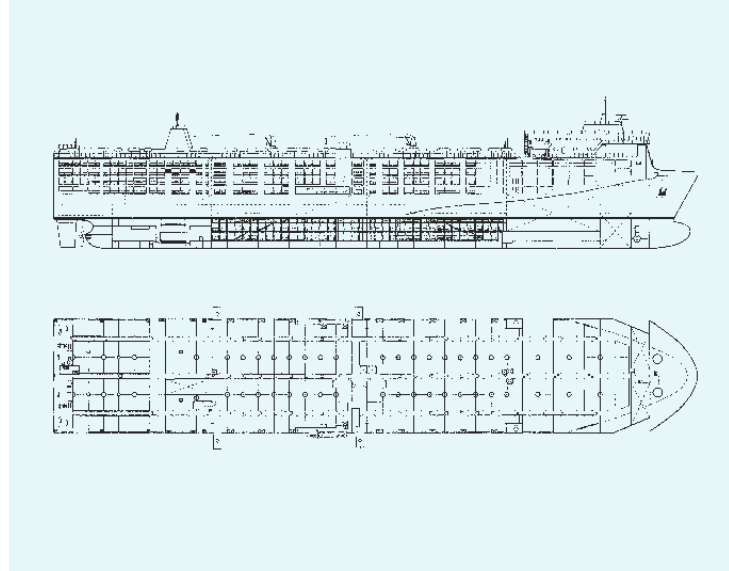
- One combined oil fired/exhaust gas boiler 1,600/800 kg/h.

Auxiliary engines plant

- Three diesel generator sets, 60 cycles, abt. 1,500 kW each, at 900 RPM.
- One emergency generator, 60 cycles abt. 1,500 kW each, at 900 RPM.
- Three diesel generator sets, for P.O.D. and AMSA, 60 cycles, abt. 1,500 kW at 900 RPM.

Livestock Carrier

24,000 m²



Builder: Shipyard ULJANIK
 Name: m/s BECRUX
 Owner / Flag: Syssex Shipping Inc. / Panama
 Designed by: Shipyard Uljanik
 Delivered: 2002

Classification: ± RINA; ± 100 A1.1-MN-LSC-NAV.II-IAQ1, Australian, New Zealand and Irish Rules for carriage of livestock

Length over all 176.50 m
 Length btw perp. 165.00 m
 Breadth moulded 31.10 m
 Depth to deck No. 10 24.08 m
 Draught design 7.70 m
 Draught scantling 8.60 m
 Deadweight at design draught 10,800 t
 Deadweight at scantling draught 13,400 t
 Main engine: ULJANIK/MAN-B&W; 7S50MC-C
 MCR: 11,060 kW/127 RPM
 Trial speed at 90% MCR, on draught of 7.7 m 20.4 knots

Capacities

Cargo space, total net pen area 24,000 m²
 Ballast tanks/fresh water abt. 4,000 m³

Provisions

Heavy fuel oil abt. 2,000 m³
 Diesel fuel oil abt. 180 m³
 Lubricating oil abt. 145 m³
 Fresh water abt. 225 m³
 Consumption HFO: abt. 42/24 hours
 Cruising Range: 18,600 n.m.
 Crew Complement: 38

The vessel is built as Livestock Carrier, suitable to carry sheeps and cattles in world wide service.

Cargo equipment

- Food distribution system for Livestock of 50 t/h of pellets.
- Water production system of 600 t/day
- Ventilation system for 45 air changes for open decks.
- Ventilation system 60/40 air changes for enclosed decks.

Transmission

- Fixed propeller plant.

Heating plant

- One combined oil fired/exhaust gas boiler 2,000/1,000 kg/h.

Auxiliary engines plant

- Three diesel generator sets, 60 cycles, 1,120 kW each, at 900 RPM.
- One emergency generator, 60 cycles 120 kVA
- One AMSA generator, 60 cycles 960 kW at 900 RPM.

Fishing Vessel - Stern Trawler

21.6 m



Builder / Yard No.: Shipyard KRALJEVICA / 510
 Name: m/s PETER PAN
 Owner / Flag: Peter Pan Tours, Opatija / Croatia
 Designed by: Boat's Consulting d.o.o., Rijeka
 Delivered: 2001

Classification: 100 A1-4-RI *M1-AUT 3* R

The ship is built according to rules of Hrvatski registar brodova (Croatian Register of Shipping)

Main characteristics

Length over all	abt. 21.6 m
Length btw perp.	19.5 m
Beam (max., without fenders)	6.4 m
Depth to main deck	3.7 m
Draught (full, load)	abt. 3.0 m
Deadweight - (as difference between full displacement and light ship weight)	37.7 t
Max. stern draught at full load	3.45 m
Main engine:	368 kW
Trial speed	abt. 9 kn at 85 % MCR and T=2.85
Max. displacement	149 t

Tanks capacities

• fuel oil tank	24 m ³
• fresh water tank	4.5 m ³
• lubricated oil tank	0.3 m ³
• fish hold	30 m ³
• sewage tank	2.2 m ³

Fishing equipment

Fish is stored in refrigerated holds (temperature 0-2 °C) that are insulated by expanded polyurethane foam and lined with stainless steel plates. In addition to the fish holds and equipment for fish manipulation, fishing equipment consists of: hydraulic winch (hydraulic pump powered by main engine PTO)

Equipment for navigation & communication

- GPS Sensor E 32001 RAYSTAR 112LP
- Electronic Compass KVH 1000
- Chart plotter R 32003 Raychart 630 102 LCD Color Chart plotter

- Electric hydraulic pump for rudder 24 V
- Autopilot: M8110 Raypilot 650, M81113 type 300 24 V
- Rudder position indicator with transmitter (box arranged near the manual rudder control)
- Panels for controlling floodlight, outdoor lighting, siren, windows wipers
- GPS Sensor E 32001 RAYSTAR 112LP
- Electronic Compass KVH 1000
- Chart plotter R 32003 Raychart 630 102 LCD Color Chart plotter
- Electric hydraulic pump for rudder 24 V
- Autopilot: M8110 Raypilot 650, M81113 type 300 24 V
- Rudder position indicator with transmitter (box arranged near the manual rudder control)

Architecture

Crew

Crew consists of four members placed in fore part under and over main deck in two single-bed and one double-bed cabin with collective sanitation on main deck. One spare single-bed cabin is placed on lower deck.

Crew living room is positioned in canteen with placed in superstructure next to the galley.

Crew equipment

Crew accommodations are placed on fore part as shown on general arrangement. Electric marble plates 24 V make heating in crew accommodations.

